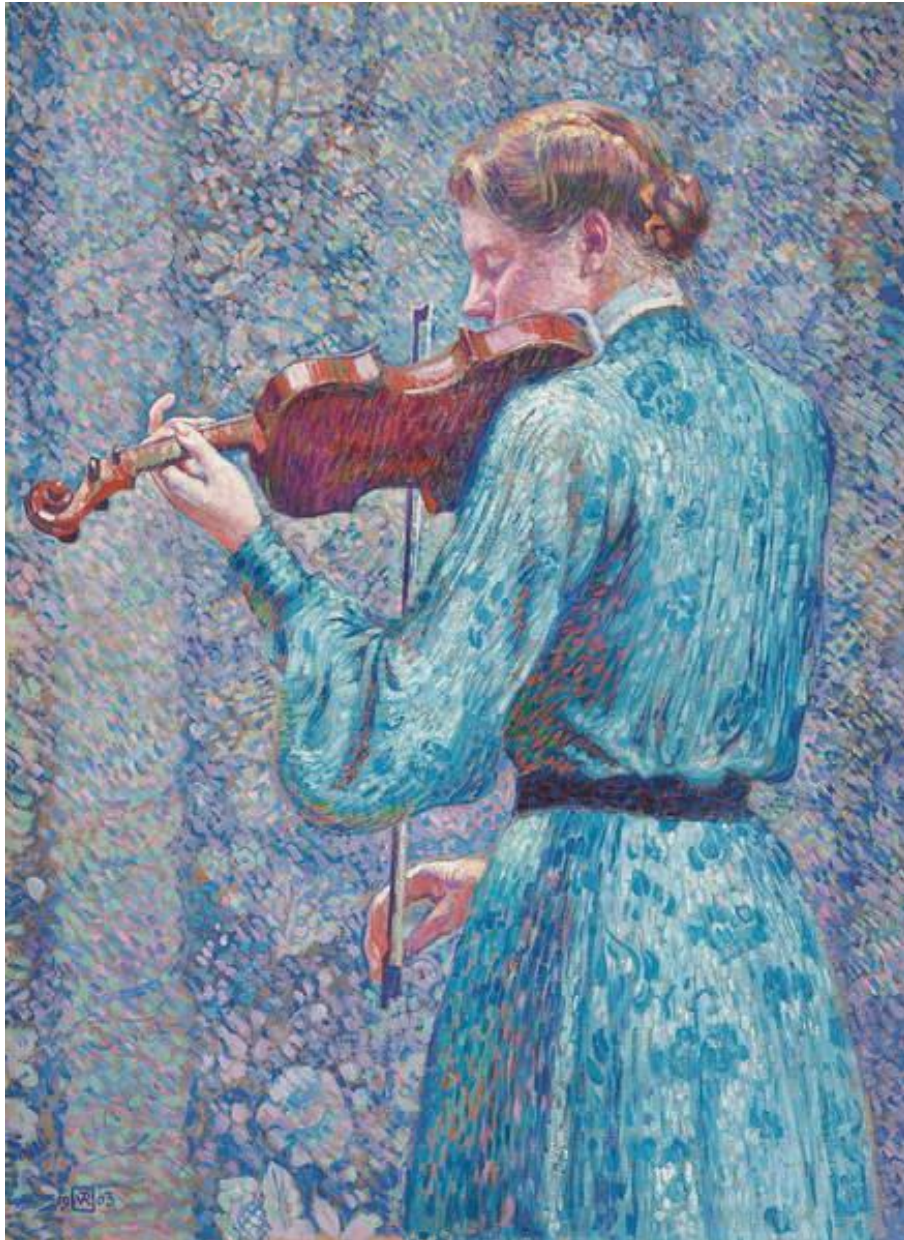


**Theo van Rysselberghe, *Marie-Anne Weber Playing the Violin*,  
1903**



**\*\*First Question First\*\***

What is *your* immediate reaction to this artwork?

Trust it. Write about it. Use the guide sheet for help.

Continue reading for another perspective and journal questions.

**Theo van Rysselberghe, *Marie-Anne Weber Playing the Violin*,  
1903**

The music we love together is like perfume; a whiff or note of it immediately brings our lost loved one to us. And so often that one song, that one piece then hovers, serenading us to sleep for days, waking us at every sunrise. It can become the background to our day. So often I have been surprised when realizing, once more, that the particular Beethoven sonata I grew up hearing my Dad play on the piano has been playing in my head for who knows how long. He accompanies me in life.

In this painting, the violinist's blue figure is barely distinct from her blue background. The warm colors of her instrument, face, and hair lift her into focus. With her back to us, she becomes the backdrop of the scene. Blue upon blue, distinguished by notes of warm orange. The sorrow of loss warmed by melody.

Q.) Is any particular music visiting you these days? How do you feel as it plays on in your mind? Where does it take you?